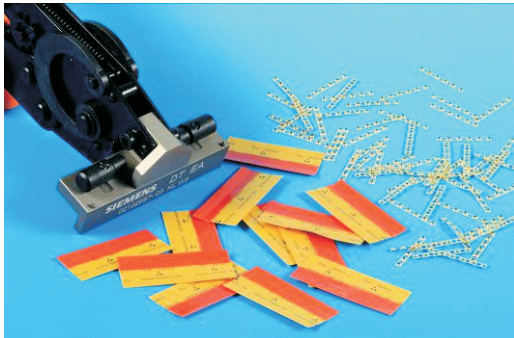




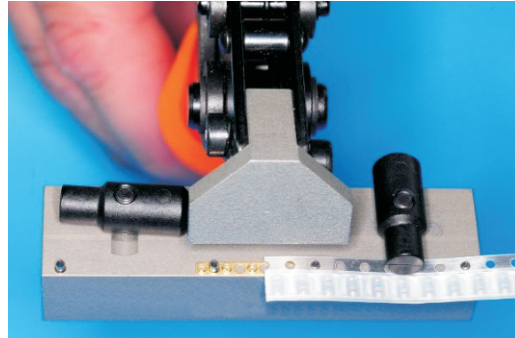
TOP-Splice and SMD Splice Shims for „Mono Tool“

ESD Safe Cover Tape Joiners for e.g. 8 mm SMD Tapes

- Patent applied for -



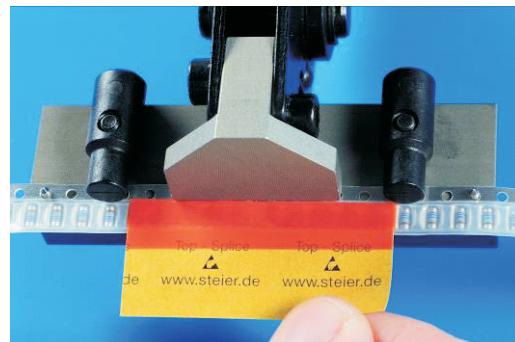
1.) TOP-Splice, SMD Cartridge Tool + Shim-Cartridges



2.) Shims and SMD Tape ends inserted in Tool and „riveted“ together



3.) remove narrow paper strip from back



4.) apply Top-Splice to the edge of the Cover Tape and firmly press together



5.) tear along the micro perforation to remove the „handle“



6.) Done!



TOP-Splice:

Order No: 3.8643.00
Size: 4,3 x 40 mm
Unit: 1,500 / Carton

SMD Splice Shims for „Mono Tool“:

3.0002.00
4,000 Shims per box

